



ULVERSTON AUCTION MART

Tuesday, 4th December 2018

LAMBS

A smaller show of lambs brought forward this week with the trade increasing on the week previous resulting in a market average of 176.44 pence per kg.

The top price per KG of 211.63p went to R Johnson & Son, Glebe Farm for a 43kg Texel lamb purchased by Lancashire Direct.

Leading Prices per Head

(Tex)	J Woodburn & Partners	£100.00
(Kerr)	FW Park	£69.50
(Char)	DJ Dickinson	£89.50
(Blac)	RB & FL Troughton	£82.00
(Suf)	R Falconer & Son	£84.00

EWES

A larger show of ewes forward this week with the trade slightly less than the week previous.

Leading Prices per Head

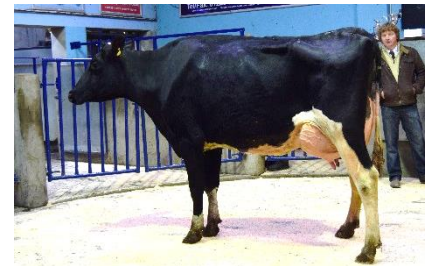
(Tex)	H & JE Watson	£70.50
(Mule)	WR Irving	£52.50
(Char)	H & JE Watson	£68.50
(Suf)	J Craghill	£65.50

DAIRY CATTLE

A nice show of dairy cattle brought forward for the Christmas show. With the show champion going to C & AJ Woodhouse, Stubb Place Farm which sold for £2000.00

Leading Prices

(Hol)	C & AJ Woodhouse	£2000.00
(BF)	B Cooper	£1400.00



Champion from C & AJ Woodhouse

CALVES

A very good show of calves brought forward this month with the show champion going to M & R Nelson, Toppin Rays for a British Blue Cross Bull which sold for the top price of £370.00.

Leading Price Bulls

(BRB)	M & R Nelson	£370.00
(FKV)	TW Stephenson	£355.00
(Char)	JS & IM Wilson	£350.00
(Mon)	JS & IM Wilson	£240.00
(AAx)	TW Stephenson	£200.00



Champion from M & R Nelson

Leading Price Heifers

(BRB)	S & A Wood	£320.00
(Lim)	JS & IM Wilson	£280.00

PRIME CATTLE

A fantastic show of prime cattle brought forward for our annual Christmas prime cattle show, with the show champion going to T Postlethwaite & Co, Holm Bank for a British Blue bullock that weighed 664kg and sold for the top price of £3.00 per KG reaching a total of £1992.00 purchased by Woolley Brothers.

Leading Price Bullocks (price per KG)

(BRB)	T Postlethwaite & Co	£3.00	664kg	£1992.00
(Sim)	M Cook	£2.07	648kg	£1341.36
(Lim)	M Cook	£2.62	624kg	£1634.88
(BA)	M Cook	£2.50	604kg	£1510.00
(Char)	Colt Park Ltd	£2.18	564kg	£1229.52

Leading Price Heifers (price per KG)

(BRB)	T Postlethwaite & Co	£2.35	482kg	£1132.70
(Lim)	T Postlethwaite & Co	£2.70	572kg	£1554.40

Champion from
T Postlethwaite & Co



Our Christmas show and sale of prime sheep will be held on Monday 10th December with classes for Junior farmers and new to this year, the show and sale of in lamb pure bred ewes.